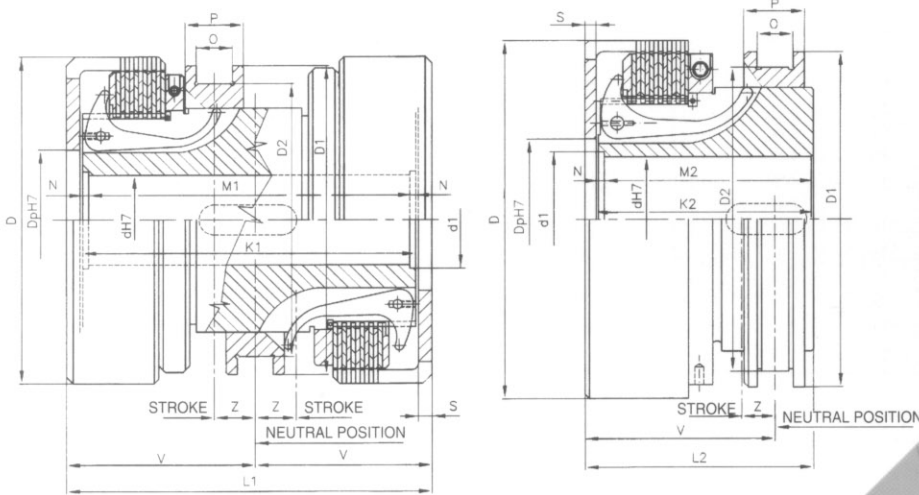




POHONY • DRIVES • ANTRIEBE



MECHANICALLY ACTUATED DISC CLUTCHES AND DOUBLE-CLUTCHES LSV

ARE FRICTION DISENGAGEABLE CLUTCHES, WHICH CAN BE SWITCHED ON AND OFF BY WORKING LOAD AND ROTATIONS, THE DOUBLE CLUTCHES ARE DESTINATED FOR REVERSATION. BOTH PARTS ARE CONTROLLED BY ONE ENGAGING SLEEVE AND ARE THEREFORE SUITABLE FOR GEARBOXES WITH FREQUENT CHANGE OF SENSE OF ROTATIONS, FOR SHIP REVERSIBLE GEARBOXES. THEY CAN WORK IN LUBRICATED OR IN DRY ENVIRONMENT.

MAIN TECHNICAL DATA AND DIMENSIONS (mm)

TYPE-NO. SIZE		3940 2.5	3940 4	3943 20	3944 32	3946 63	3947 90	3948 125
Rated torque in Nm		25	40	200	320	630	900	1250
Maxim. revolutions in oil	min ⁻¹	3000	3000	3000	2800	2500	2300	2000
Engaging force	N	100	120	400	500	650	950	1250
Weight kg	single-clutch	1.5	2	7.5	12	16	23	32
	double-clutch	2.6	3.2	12.6	20	29	39	52
D		82	93	147	162	195	215	250
Dp H7	min	40	45	70	80	100	110	120
	max	50	60	100	110	150	160	180
D1		65	75	140	150	150	165	190
D2		55	60	125	135	135	145	165
dH7	min	15	18	25	30	40	48	50
	max	30	35	45	55	65	75	85
d1		-	-	45	52	57	70	76
L1		112	114	160	170	190	220	240
L2		67	70	100	105	131.5	130.5	140
K1		100	100	146	157	177	203	223
K2		60	63	93	98	125	122	131
M1		-	-	139	150	172	194	215
M2		-	-	89.5	94.5	122.5	117.5	127
N		-	-	3.5	3.5	2.5	4.5	4
O H8		10	10	16	16	18	18	22
P		17	17	26	26	30	30	35
S		6	6	6	6	6	8	8
V		57	57	80	85	95	110	120
Z		8.5	8.5	14	14	16	18	20

Clutches/Double-clutches LSV can be switched on and off by full load of the double-clutch. They can be reversed under normal circumstances by lower rotations and by lower output, simultaneously the time dwell of engaging equipment must be kept (cca 6 second) in neutral position. Only in extraordinary events the so called emergency reversion is admissible i.e. shifting of engaging lever from one extreme position to another by maximum rotations and output.

Clutches/Double-clutches LSV are delivered in 6 sizes, destinated by Type-No. Technical and dimensional parameters are stipulated in the table. By sizes 2,5; 4; 63 and 125 the clutches are delivered with full shell. The clutches can run by temperatures max. 120°C inside the gearboxes. They are lubricated and cooled by oil, which lubricates also the gearing.

DATA FOR ORDER:

- Number of pieces
- Bore of the carrier and shell
- Lubricated, dry execution



PSP POHONY a.s.

750 53 PŘEROV • CZECH REPUBLIC

TEL. 0641/23 36 30. 23 36 33

FAX 0641/20 31 82, 20 31 60



Quality system certified
according to DIN ISO 9001