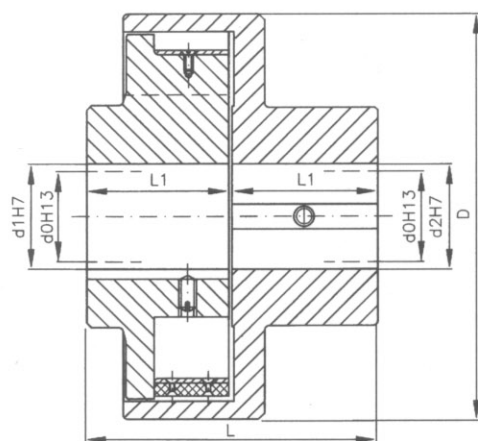




POHONY • DRIVES • ANTRIEBE



## CENTRIFUGAL CLUTCH WITH CONTROLLED GRIP - FOR SHAFTS **RRH**

CLUTCHES OF SIMPLE DESIGN ENABLING GRADUAL CONNECTION AND START OF DRIVEN MACHINE. CLUTCHES ENABLE AUTOMATIC AND SMOOTH START OF DRIVEN MACHINE AS SOON AS REVOLUTION OF DRIVING MACHINE ACHIEVE FIXED VALUE. THEY ARE USUALLY USED TO CONNECT WORKING MACHINE WITH ELECTRIC MOTOR WITH SHORT-CIRCUIT ARMATURE. MAINLY IN SUCH CASES WHEN IT IS NECESSARY TO LOWER UNDESIRABLE CURRENT SURGE IN ELECTRICAL NETWORK. CLUTCHES RRH ARE EXTREMELY SUITABLE FOR HIGH-SPEED DIESEL ENGINES. CLUTCHES DO NOT TRANSMIT AXIAL FORCES AND MOTIONS.

## MAIN TECHNICAL DATA AND DIMENSIONS (mm)

Type No	Size	Model	Blank d <sub>0</sub> H13 750	Transmitted output kW at rev/min		d <sub>1,2</sub> H7 min. max		D	Dimensions of RRH		Weight kg	
				1000	1500	min.	max.		L	L <sub>1</sub>		
6551	3	A	-	-	-	3.6	16	25	105	81	40	2.5
		B	-	-	-							
6552	4	A	-	-	-	5.8	22	35	125	101	50	4
		B	-	-	-							
6553	5	A	-	-	-	8.8	22	35	144	111	55	5
		B	-	-	-							
6554	6	A	-	-	-	14.7	28	40	165	131	65	8
		B	-	-	-							
6555	7	A	-	-	10.3	20.6	28	38	182	131	65	11
		B	30/25	-			38	50				
6556	8	A	30/25	-	14.7	29.4	38	48	205	151	75	17
		B	40/35	-			48	50				
6557	9	A	30/25	-	22.1	44.1	38	50	225	151	75	23.5
		B	40/35	-			50	70				
6558	10	A	40/35	-	30.9	62.5	48	60	250	171	85	26
		B	52/47	-			60	75				
6559	11	A	40/35	17.6	44.1	88.2'	50	70	280	171	85	35
		B	62/57				70	85				
6561	12	A	47/42	22.1	55.3	110'	56	75	300	190	95	45
		B	65/57				75	90				
6562	13	A	47/42	35.3	88.2'	176.4'	56	75	350	190	95	75
		B	65/57				75	95				
6563	14	A	57/52	50	125'	221'	65	80	400	210	105	100
		B	70/62				80	100				

\*) Data are informative only. Must be consulted with producer.

Clutches of RR series use centrifugal force of two sets of weight to transmit torque. Weights are shaped as circular segments, are put into carrier, are gripped by rolled up spring equipped with friction lining. Centrifugal force originated from sets of weights overcomes spring force at given revolutions and pushes spring against jacket rim. Driving and driven parts are connected in this way and torque is transmitted. Clutches RRK are not supplied with finished boring, they have only blank bore according to the table.

### Ordering data

- name of clutch
- type number
- blank bore according to table



750 53 PŘEROV • CZECH REPUBLIC

TEL. 0641/23 36 30, 23 36 33

FAX 0641/20 31 82, 20 31 60



Quality system certified  
according to DIN ISO 9001